



# Caledonian

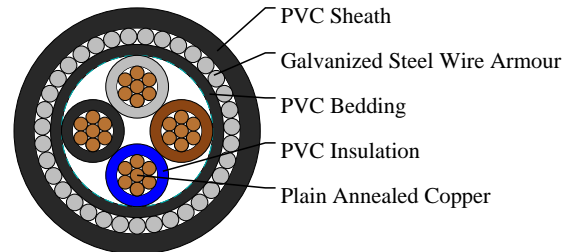
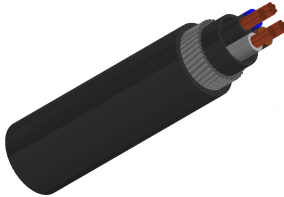
## FIREGUARD Flame Retardant Power & Control Cables

www.caledonian-cables.co.uk

sales@caledonian-cables.co.uk

### 600/1000V PVC Insulated, PVC Sheathed, Armoured Power Cables to BS 6346 (4Cores)

FGD400 1VVMV-R (CU/PVC/PVC/SWA/PVC 600/1000V Class 2)



### APPLICATIONS

The cables are intended for use in fixed installations in industrial areas, buildings and similar applications.

### STANDARDS

Basic design to BS 6346

### FIRE PERFORMANCE

Flame Retardance (Single Vertical Wire Test)	BS EN 50265-2-1
--	-----------------

### VOLTAGE RATING

600/1000V

### CABLE CONSTRUCTION

Conductor: Annealed copper wire, stranded according to BS 6360 class 2.

Insulation: PVC TI 1 according to BS 7655-3.1.

Bedding: Extruded PVC or taped bedding comprising two or more layers of PVC tape or other synthetic tape (for cables having a nominal conductor area of 16mm<sup>2</sup> and above).

Armouring: Galvanized steel wire.

Outer Sheath: PVC TM 1 according to BS 7655-4.1.

Outer Sheath Option: UV resistance, hydrocarbon resistance, oil resistance, anti rodent and anti termite properties can be offered as option. Compliance to fire performance standard (IEC 60332-1, IEC 60332-3, UL 1581, UL 1666 etc) depends on the oxygen index of the PVC compound and the overall cable design. LSPVC can also be provided upon request.

### COLOUR CODE

Insulation Colour: Brown, blue, grey, black.

Sheath Colour: Black (other colours upon request)

### PHYSICAL AND THERMAL PROPERTIES

Maximum temperature range during operation (PVC): 70°C

Maximum short circuit temperature (5 Seconds): 160°C



# Caledonian

## FIREGUARD Flame Retardant Power & Control Cables

[www.caledonian-cables.co.uk](http://www.caledonian-cables.co.uk)

[sales@caledonian-cables.co.uk](mailto:sales@caledonian-cables.co.uk)

Minimum bending radius:

Circular copper conductors: 6 x Overall Diameter

Shaped copper conductors: 8 x Overall Diameter

### Electrical Properties

Conductor Operating Temperature: 70°C

Ambient Temperature: 30°C

### DIMENSION AND PARAMETERS

No. of Cores × Cross-sectional Area	Conductor Class	Nominal Insulation Thickness	Nominal Bedding Thickness	Nominal Sheath Thickness	Nominal Steel Wire Armour Diameter	Approx. Overall Diameter (Taped Bedding)	Approx. Weight
No. x mm <sup>2</sup>		mm	mm	mm	mm	mm	kg/km
4x6.0	2	0.8	0.8	1.5	1.25	--	850